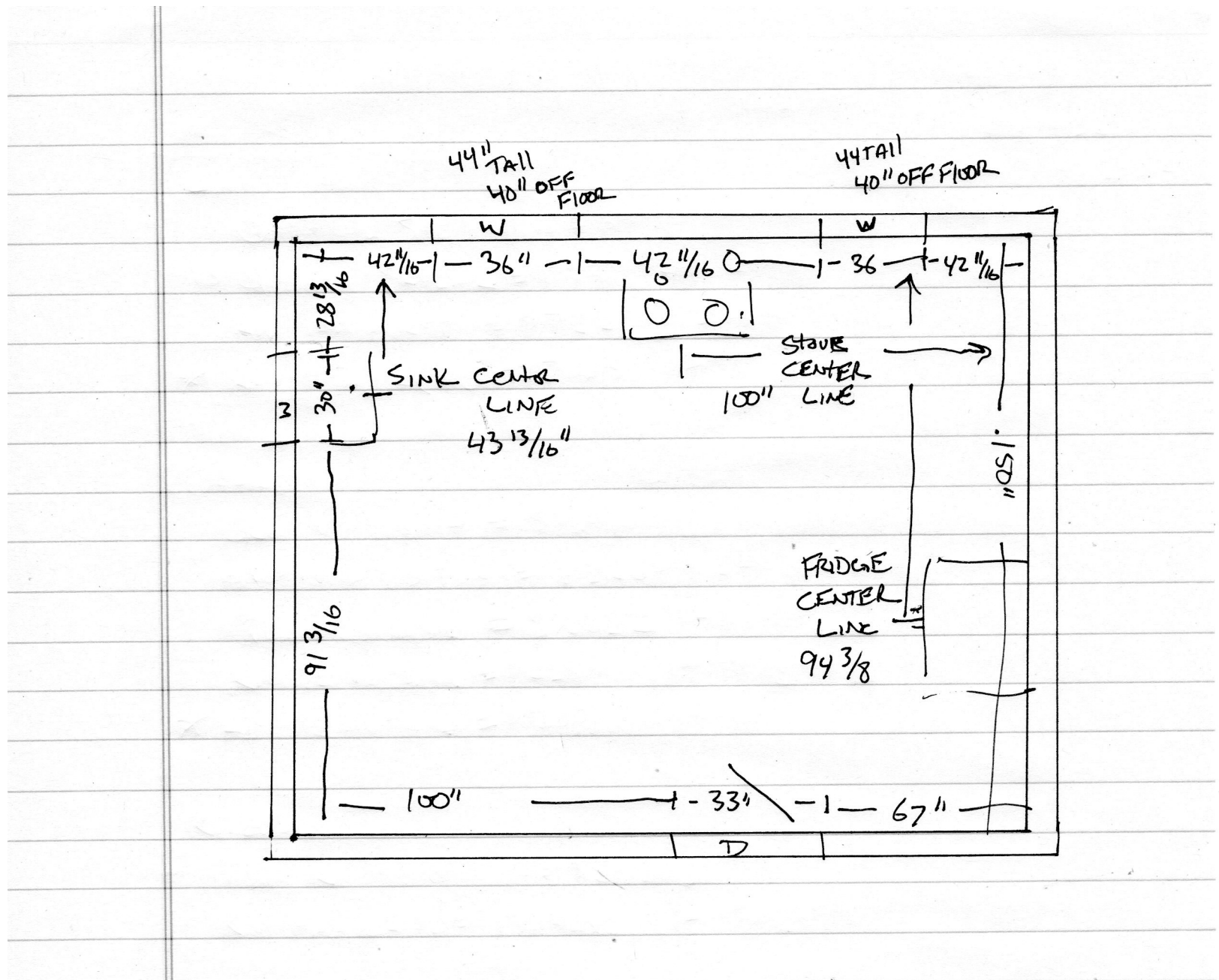


HOW TO MEASURE FOR KITCHEN DESIGN

THE IMPORTANT THING TO REMEMBER IS THAT FOR KITCHEN DESIGN, WE NEED TO KNOW WHAT SPACE IS AVAILABLE TO PLACE CABINETS OR APPLIANCES. WHEN WE MEASURE, WE ALWAYS MEASURE FROM TRIM TO TRIM. A 36" DOOR WILL USUALLY HAVE 3 1/4" OF TRIM ON EITHER SIDE. WE NEED TO KNOW THE WHOLE MEASUREMENT IS 42 1/2" WIDE, INCLUDING THE TRIM. WE CANT PLACE CABINETS IN A SPACE WHERE TRIM GOES.

HERE IS AN EXAMPLE OF WHAT WE MIGHT DRAW WHEN VISITING A CLIENT'S HOME TO MEASURE. PLEASE NOTE THAT WE USUALLY ONLY MEASURE TO WITHIN 1/8" MEASUREMENTS.



NO SPECIAL PAPER IS NEEDED, JUST A NOTEPAD WILL DO.

WE MEASURE IN INCHES, SINCE CABINETS AND APPLIANCES ARE SOLD IN INCHES. IF YOU DO MEASURE IN FEET AND INCHES, WE CAN DO THAT MATH!

PLEASE MAKE A NOTE OF HOW TALL WINDOWS ARE, AND HOW HIGH THE BOTTOM TRIM IS OFF OF THE FLOOR. FOR CLARITY, PLEASE NOTE WHAT IS A WINDOW, AND WHAT IS A DOOR. YOU CAN USE A "D" FOR DOOR AND "W" FOR WINDOW LIKE IN THE DRAWING.

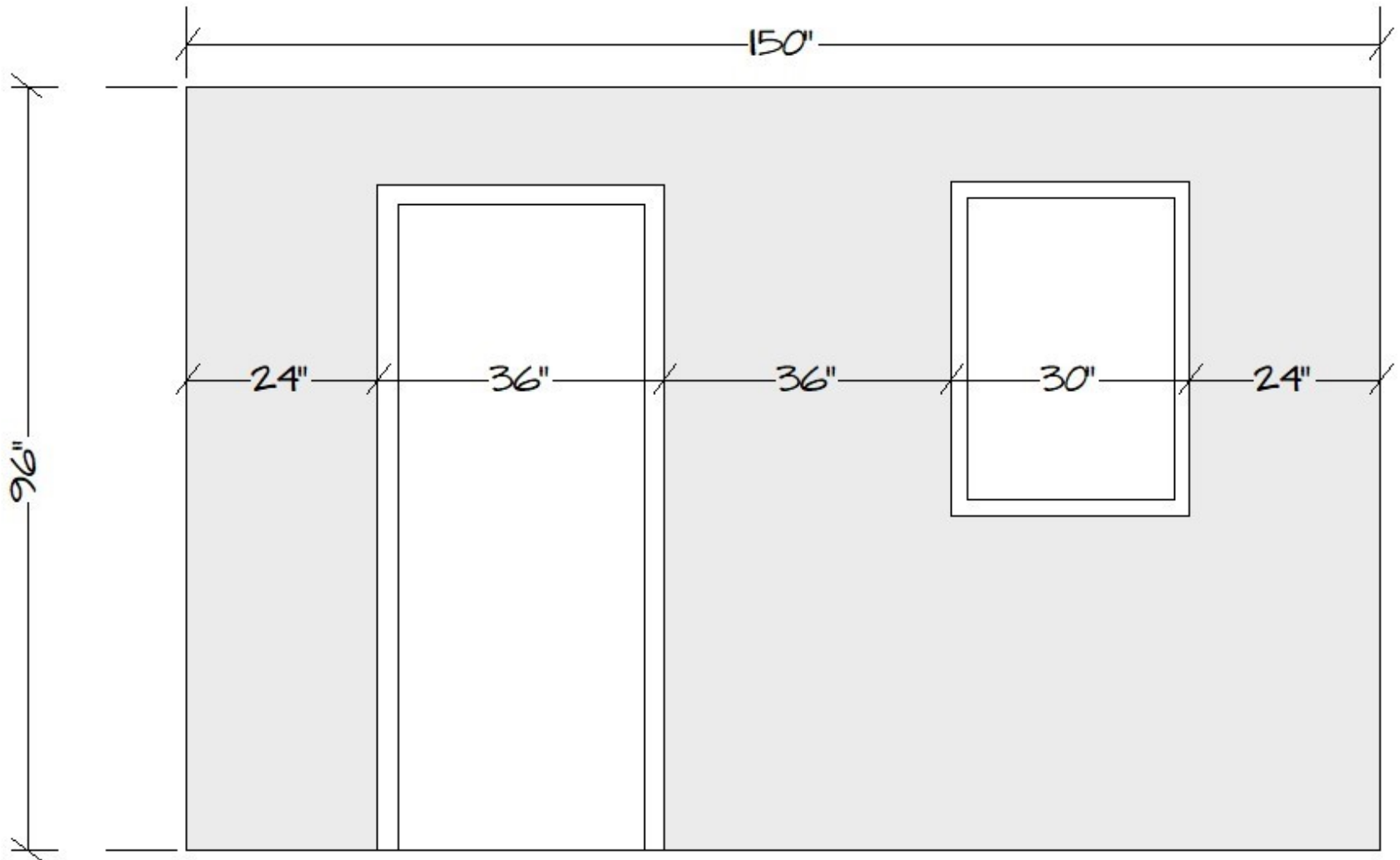
WE NEED THE CENTER LINE MEASUREMENT OF YOUR CURRENT APPLIANCES, EVEN IF YOU ARE THINKING OF MOVING SOMETHING. PLEASE MEASURE CENTERLINES FROM A WALL, NOT A CABINET. SEE CENTER LINE MEASUREMENTS IN THE EXAMPLE ABOVE.

IF YOU HAVE AN ISLAND, PLEASE MEASURE THE EDGE OF THE ISLAND COUNTER TOP TO A WALL ON EVERY SIDE.



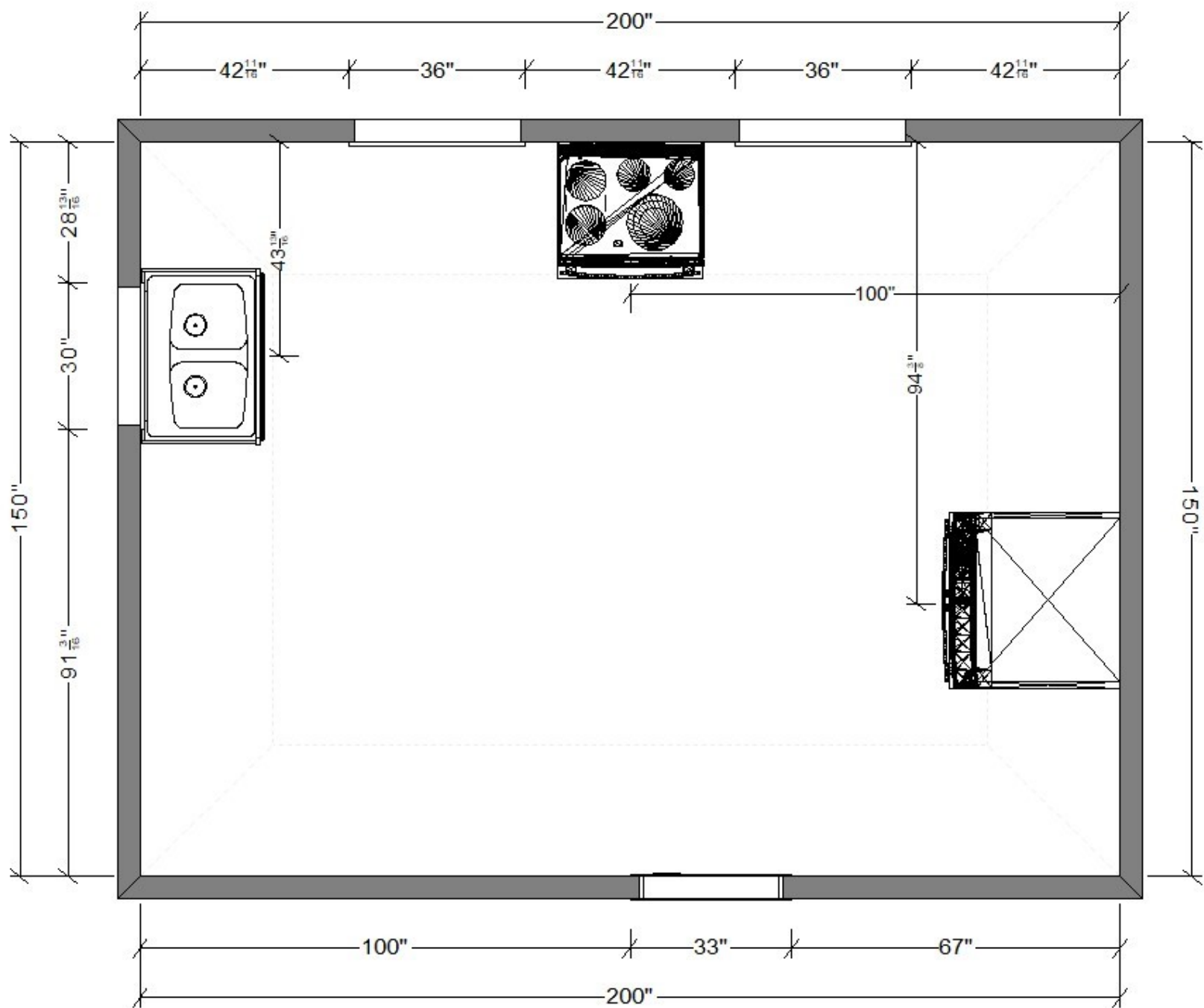
SOUTHERN
RESTORATIONS, LLC
 CABINET & DESIGN CO.

HERE IS A SIDE VIEW FROM THE COMPUTER OF WHAT MEASURING FROM TRIM TO TRIM LOOKS LIKE.



PLEASE NOTE THAT ALL MEASUREMENTS ARE FROM WALL TO TRIM EDGE OR TRIM EDGE TO TRIM EDGE.

AFTER WE RECEIVE YOUR DRAWING, HERE IS HOW IT WILL LOOK AFTER WE REDRAW IT IN THE COMPUTER, BUT BEFORE WE START ADDING CABINETS AND APPLIANCES.



PLEASE DO NOT HESITATE TO CONTACT US IF YOU HAVE ANY QUESTIONS. WE ARE HAPPY TO HELP!